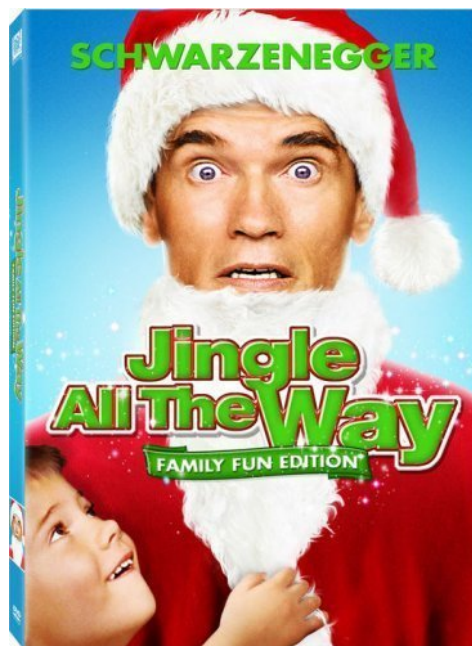
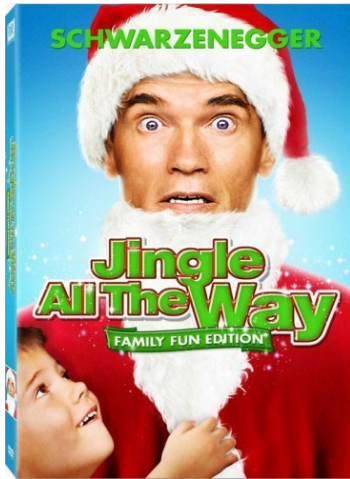


# Jingle all the way

A flickering Christmas

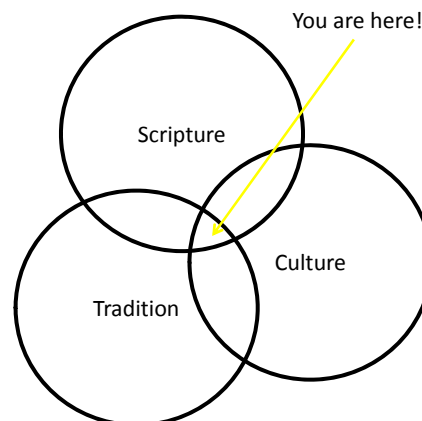


## Why?

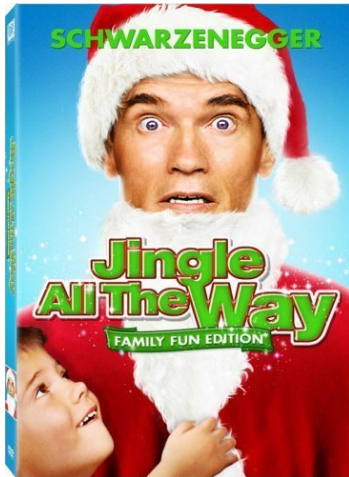


1. Fun
  1. (does church always need to be so serious?)
2. Variety
  1. Mark's Gospel (18 months)
  2. Emotionally Healthy
  3. A flickering Christmas
3. Helping us to make connections to the whole of life

## Whole life discipleship



## Why 2?



1. Such an awful film!



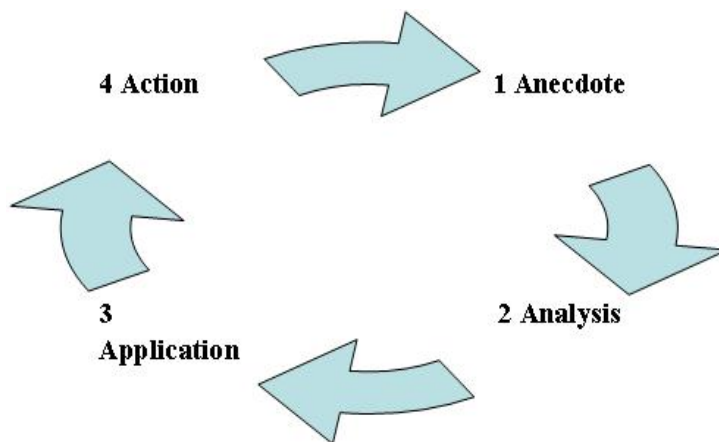
## So how do we make connections?

- Going Deeper (Gathered Sundays 6.30 – 8pm)
  - Reading and Using the Bible
  - Studying Theology
  - *Jesus and the Synoptic Gospels (starts end of Feb)*



Going deeper - theology course

1. The four 'A's model of Theological reflection



Theological Reflection...

1. Anecdote  
"Jingle all the way"



## Theological Reflection...

1. Anecdote – “Jingle all the way”
2. Analysis
  1. Consumerism
  2. Promises kept/broken
  3. Parenting
  4. Giving to those in more need
    1. The child who does this
    2. Being childlike in faith

## Theological Reflection...

1. Anecdote – “Jingle all the way”
2. Analysis
  1. Consumerism



## Theological Reflection...

1. Anecdote – “Jingle all the way”
2. Analysis – Consumerism
3. Application

### Going deeper - theology course

#### 1. The four ‘A’s model of Theological reflection

- **Application - Bringing Christian Insights to bear**
  - At this stage the challenge is to make meaningful connections between the issues raised by the story, and your knowledge of Scripture, and of the Great Tradition of Christian thought. So:-
    - Identify pictures, experiences, and stories from the Bible which resonate with the story you are exploring;
    - Draw upon your theological knowledge, asking about doctrines which might shed some light on the issues you are examining;
    - Consider the resources provided by your own Christian roots and traditions.

## Theological Reflection...

### 3. Application

<sup>19</sup> 'Do not store up for yourselves treasures on earth, where moths and vermin destroy, and where thieves break in and steal. <sup>20</sup> But store up for yourselves treasures in heaven, where moths and vermin do not destroy, and where thieves do not break in and steal. <sup>21</sup> For where your treasure is, there your heart will be also.

*Matthew 6:19-21*

## Theological Reflection...

### 3. Application

"Where your treasure is"  
This is about priorities

## Theological Reflection...

### 3. Application

“Where your treasure is”

This is about priorities

“Treasures in heaven”

Not only the afterlife – but here and now!

Eternal life starts now – it includes this life

We are citizens of the ‘Kingdom of God’ – now!

Therefore we are to prioritise the Kingdom of God over the priorities of the world

## The Kingdom of God/Heaven

- Is made possible through Jesus
- Is a party where all are welcome
- Is characterised by selfless giving

Celebrating the birth of Jesus is a good thing!



## But...

- Just don't make the party/holiday itself the no.1 reason
- Remember the reason for the party!
- Crazes will pass away but the Kingdom of heaven is eternal
- Weigh what you spend, budget and give



## Consumerism is a power

<sup>10</sup> Finally, be strong in the Lord and in his mighty power. <sup>11</sup> Put on the full armour of God, so that you can take your stand against the devil's schemes. <sup>12</sup> For our struggle is not against flesh and blood, but against the rulers, against the authorities, against the powers of this dark world and against the spiritual forces of evil in the heavenly realms.

*Ephesians 6:10-12*

## Celebrate, but celebrate well

